

## Installation for Audi A4



1.The diagram of the original head unit



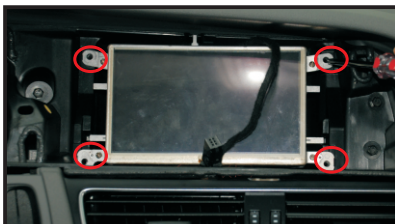
2. Use plastic pry to pry decoration plates as the picture show



3.Take out the decoration plates, pay attention to the buckles and connection



4.Disconnection the connection cables



5.Pry the four screws which for fasten the original display screen and put those well



6.Take out the original display screen, pay attention to connection cables



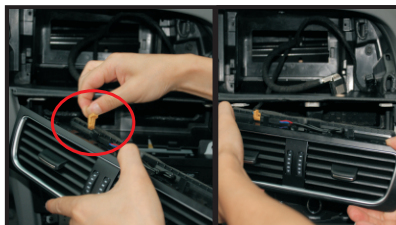
7.Take out the air condition box



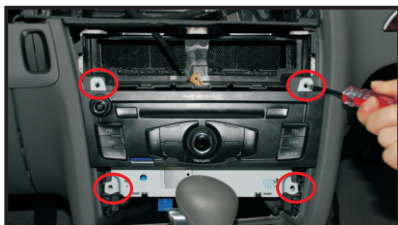
8.Take out and put it well



9. Use plastic pry to pry the air outlet, pay attention to buckles



10. Take out the air outlet, pay attention to connection cables



11. Take out the four screws which fasten the original host



12. Take out original host and disconnect those cables



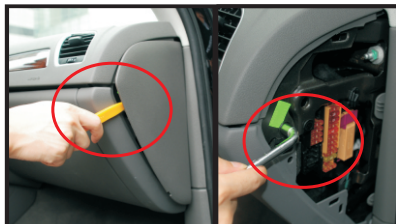
13. Take out the outside box of Multi-media with hardware key, pay attention to spring plate (The normal mode and comfortable mode without this step )



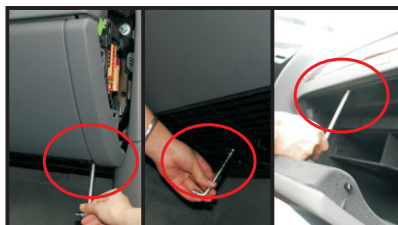
14. Take out the outside box and pay attention to the connection cables (The normal mode and comfortable mode without this step )



15. Take out the Multi-media box and disconnect the cables (The normal mode and comfortable mode without this step )



16. Pry the side plate of the glove box



17. Take out the screws as picture show



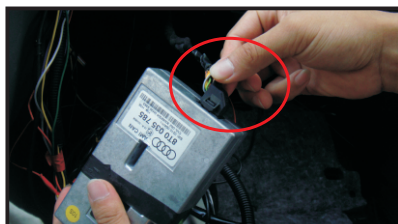
18. Take out the glove box



19. Attached accessories: 1 AV cable 2 touch control cable 3 transfer for screen 4 microphone cord 5 GPS antenna 6 convert cord 7 ipod connection cord 8 multi-connection plug 9 accessories for install



20. Put multi-connection plug into the original Multi-media box, pay attention to the direction (the normal mode and comfortable mode without this step)



21. Connect the cables of the original multi-media box (the normal mode and comfortable mode without this step)



22. Fasten the multi-media box as the picture show (the normal mode and comfortable mode without this step)

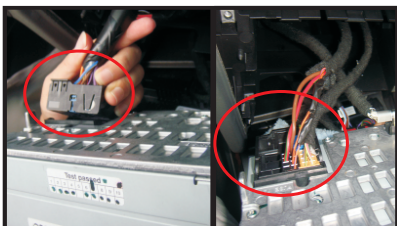


23. Put those convert cord well as the picture show

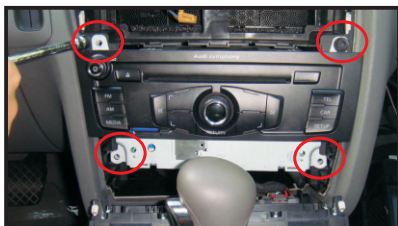


24. Connect the cables as the picture show





25. Insert the connection cable to the original host



26. Install the screws to fasten original host



27. Install the air condition box



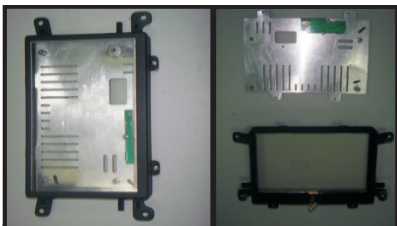
28. Put the transfer for screen and touch control cable well as picture show



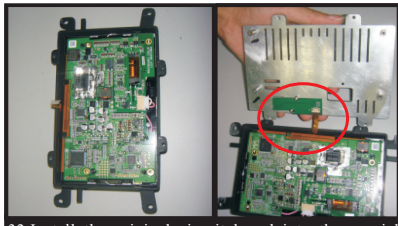
29. Insert the original display screen plug to transfer for screen plug



30. Take the original display screen for three parts

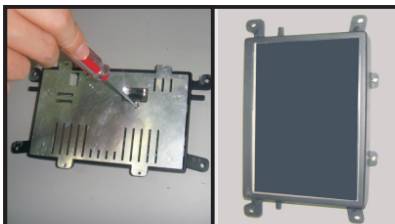


31. Take apart the special touch screen box and uncover the protective film

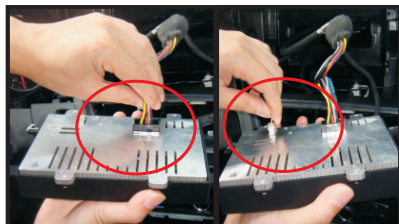


32. Install the original circuit board into the special touch screen box. Insert the wire to the original circuit (pay attention to positive and negative)





33. Install the screws



34. Insert those connection cables after the screen converted



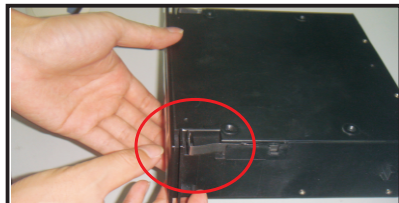
35. Install the screen and fasten by screws



36. Connect cables of the frame of original display screen and install it (pay attention to the buckles)



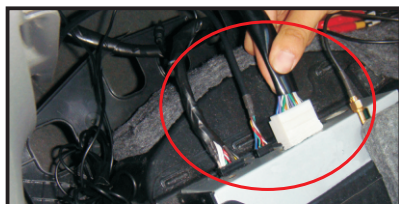
37. Take out the two spring plate from original Multi-media box (the normal mode and comfortable mode without this step)



38. Install the spring plate to special host and pay attention to direction (the normal mode and comfortable mode without this step)



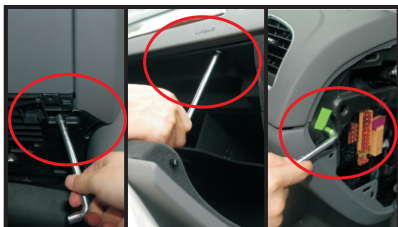
39. Install the special host into glove box (the normal mode and comfortable mode without this step)



40. Connect those connection cables of special host



41. Install the glove box back



42. Install the screws



43. Install the side plate of glove box



44. Install finish and test every functions