



CHEVOROLET CRUZE Navigation and Entertainment System

CRUZE Navigation & Entertainment



Customized Your Language on User Interface
English/Arabic/Russian/Italian/Portuguese/Spanish/Hebrew/Turkish languages are available.



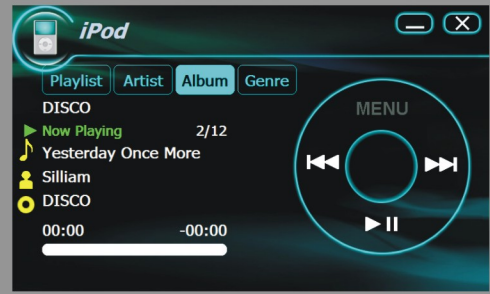
Precision Navigation
Latest Global Map Software, Intelligent Voice Guide, Automatic Route plan, Advanced Point-Of-Interest management. Other Media source (e.g. radio) also can be heard while navigation instructions.



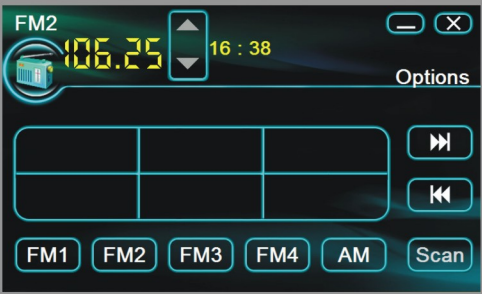
Bluetooth HandsFree
Built-in Bluetooth with A2DP, Handsfree, Support Caller ID Display, Transfer, Contacts, Call Records.



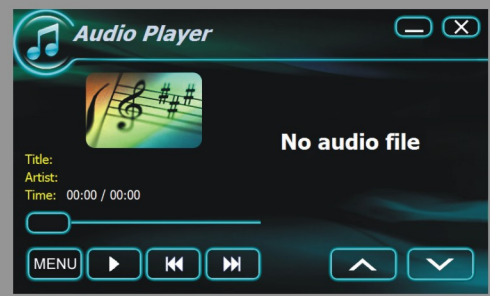
MP4 Video player
MP4 video files can be played via SD card and USB directly. Wide Screen, High Definition Display.



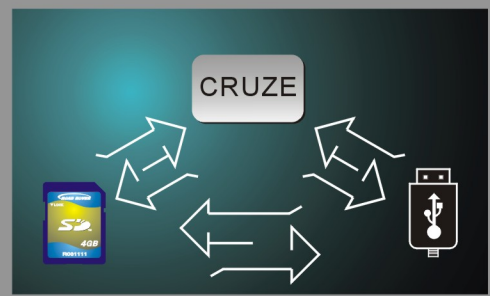
iPod drive connectivity
Supports iPod connectivity. It commands most iPods so all functions can be controlled from the Touchscreen. It is more convenient & safer to operate while driving.



Car Radio
Instant radio makes the trip more wonderful.



MP3 Audio Player
MP3 audio files can be played via SD card and USB directly when playing MP3 audio. It can display singer's information (e.g. singer's photo, titles).



Dual Zone Source
Your friends also can enjoy the fun when they are at back seat. DVD audio&video also can be played on rear seat screen, so your friends at back seat can enjoy the movie while front screen is for GPS.



Reverse Camera
A rear view camera dramatically eliminates blind spots, making it safer and easier to maneuver your Vehicle.



GO WITH ROADROVER
EXPERIENCE LEADING PRIORITY

Shenzhen RoadRover Technology Co., Ltd
www.roadrover.cn/e



New RAV4 Navigation and Entertainment System

The driving comfort and high performance of RAV4 navigation is a new interpretation of "Flexibility and high-performance SUV" concept. With the brand features of "free, enterprising and fashion", Roadrover's RAV4 navigation makes you enjoy the city life!



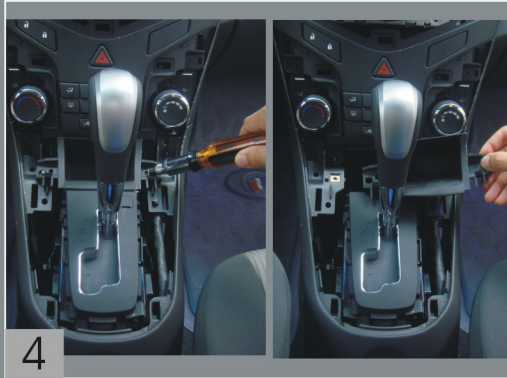
The diagram of original car CD unit.



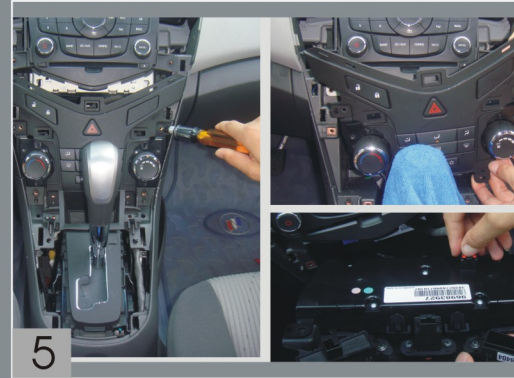
Pry the air-condition outlet frame with crow plate and be care of buckles.



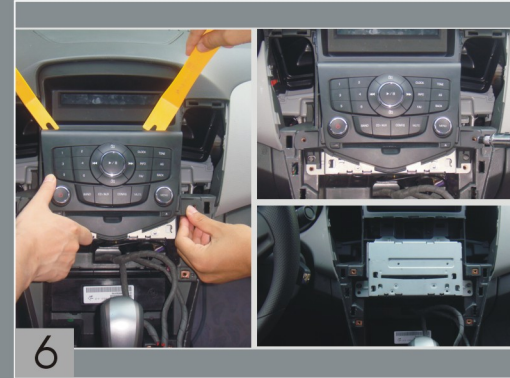
Pry the decorative plate of gearbox with crow plate. Be care of buckles and wiring.



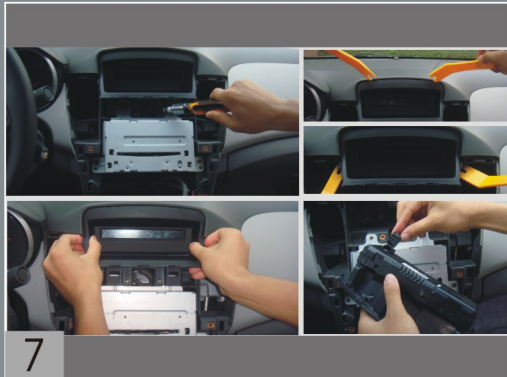
Remove the screws on the gearbox



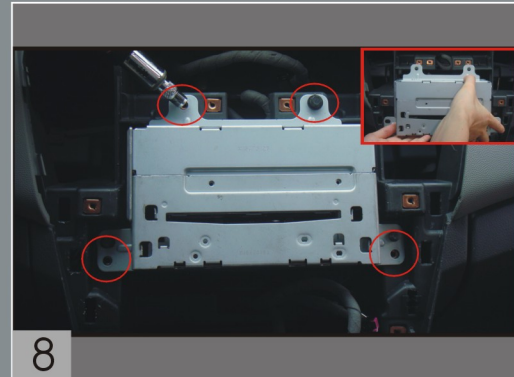
Remove the screws for fixing air-condition, then take off the air condition panel. Be care of the back wiring.



Remove the screws for fixing original car CD panel, then take the car CD out.



Remove the screws for fixing the screen of original car, then remove the screen. Be care of buckles and wiring.



Remove the screws for fixing the head unit of the original car and take out the head unit. Please note to disconnect the back wiring.



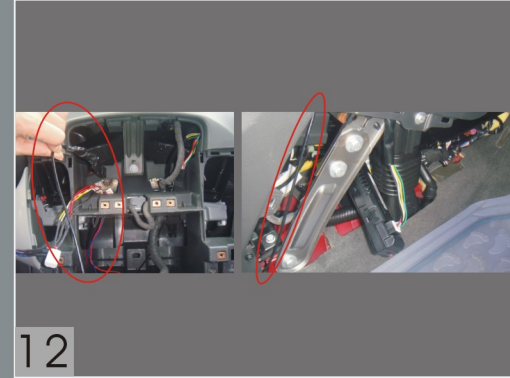
Install the GPS antenna



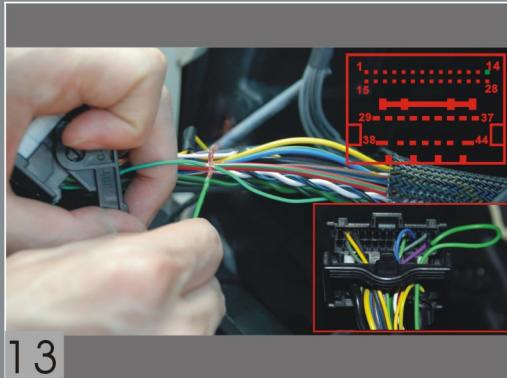
Remove the original car screen from screen frame and note each buckle.



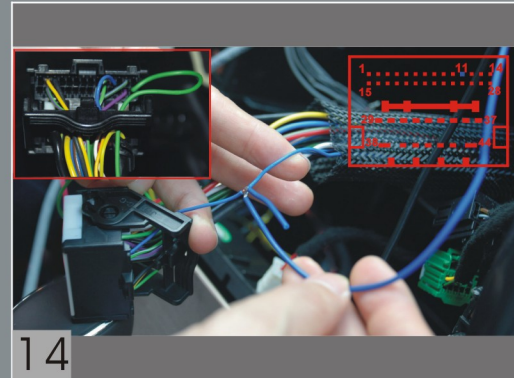
Remove the left guard plate from the position of copilot and note each buckle.



Pull out the white head of AUX cable from the position of original car screen, then pull it to the back of glove box along the left guard plate of the position of copilot.



Connect the green data wire of AUX cable with the green wire (28 pin) of original car by electrician plastic.



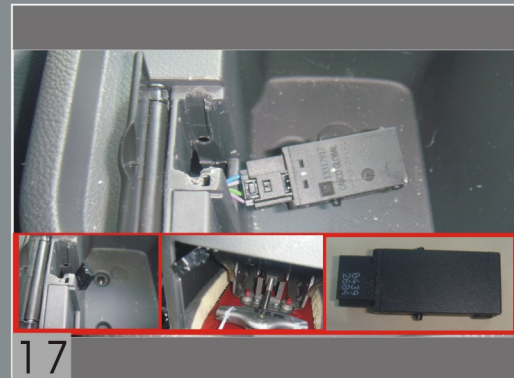
Connect the blue data wire of AUX cable with the blue wire (11 pin) of original car by electrician plastic.



Remove the back panel glove box



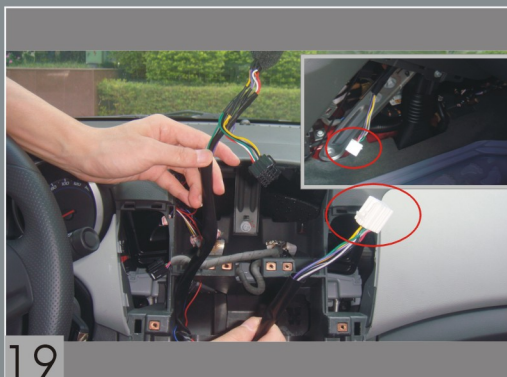
Pry the original car AUX socket with crow plate.



Remove the data wire plug of AUX socket, then pull out the plug cord from back of glove box, then install the AUX socket to original position.



Connect the two plugs. Please keep wires in order to avoid the effect to the handbrake function. Install the cover panel of glove box.



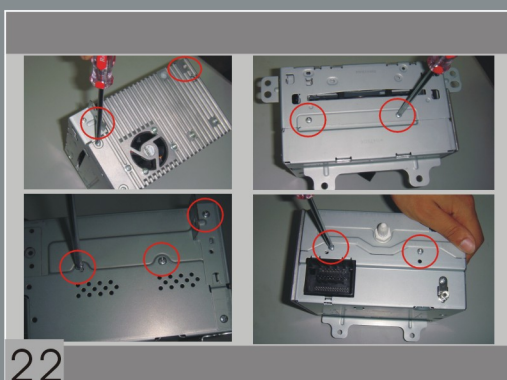
Pull out the screen switch wire which side with two ports from original car screen. Pull the other side to left lower guard plate.



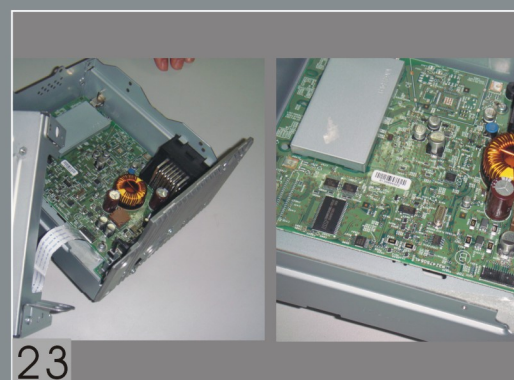
Package the screen of original car with protection kit and connect wiring harness. Install the screen to the place as picture show and fix it well.



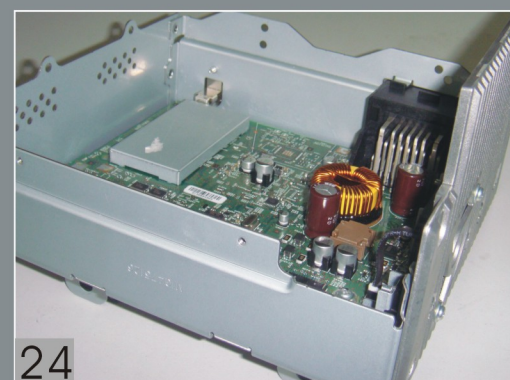
Install the left guard plate. Install DVD function follow the continuing operation. Otherwise, skip to step 27.



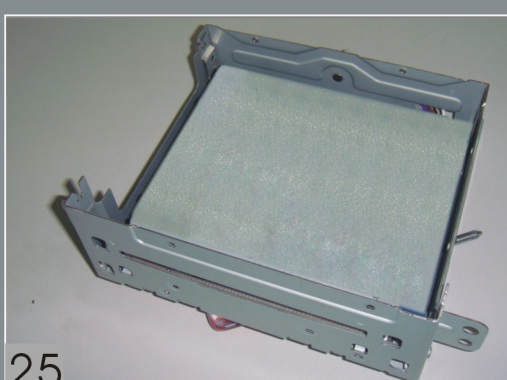
Remove the four screws on the head unit as picture showed.



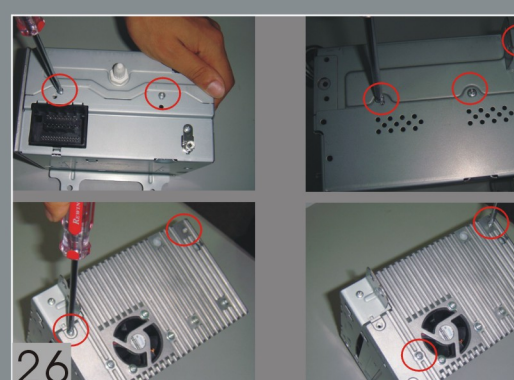
Pry the DVD loader of the head unit of the original car, then disconnect the cable as picture showed.



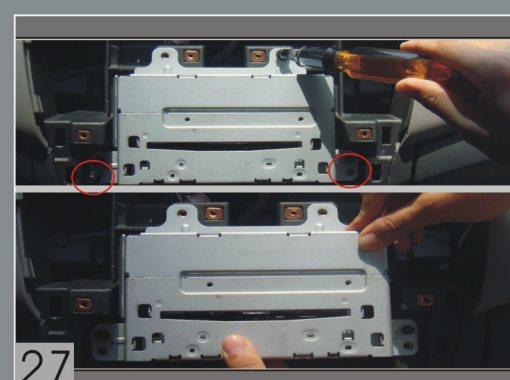
The head unit disassembling finished.



The DVD part of the GPS device.



Install the DVD part to the head unit disassembling already and fix screws showed on the picture.



Connect the back wiring of DVD, then install the head unit to the car and fix the screws.



Put the the USB cable to the glove box as picture showed.



Connect the wiring of the screen of GPS device, then install the screen to the car. Fix the screws and note the buckles.



Connect the wiring of the head unit panel, then install it with screws.



Connect the wiring of the air-condition panel and fix it to the car.



Install the gearbox and fix the screws on the air-condition panel.



Install the decorative plate and note each buckle and wiring connection.



Install the decorative plate of air condition air outlet and note each buckle.



Finish the installation, power on for testing.



The diagram of installation done.